

10 LPM

OF OXYGEN.

NO PROFIT-DRAINING

LIQUID DELIVERIES.

NO NEED FOR TWO

CONCENTRATORS WHEN

ONE WILL DO.

IDEAL? YOU BET.



The 10LPM “Hi-Flo₂ Pro.”
The low-cost modality for high-flow patients.



Why settle for anything

The patented ATF® module gives the Integra_{TEN}™ unparalleled benefits . . .

For the Dealer/Provider . . .

- The most reliable, cost-effective system for serving high-flow patients
- Eliminates the costly oxygen deliveries that needed with alternate modalities
- Reliable alarms are not battery-dependent
- Compact cabinet with integrated handle makes transport easy
- Steel-fork casters stand up to tough handling
- Double-insulated cabinet with two-prong power cord (grounded outlet not needed)
- Durable, molded color cabinet retains new look.

In Maintenance . . .

Patented ATF® module (Advanced Technology Fractionator) eliminates more than 200 troublesome parts found in other conventional oxygen concentrators!

- No failure-prone solenoid valves
- 40 fewer pneumatic connections
- 35 fewer electrical connections
- No electronics for valve sequencing
- No pressure-reducing regulator

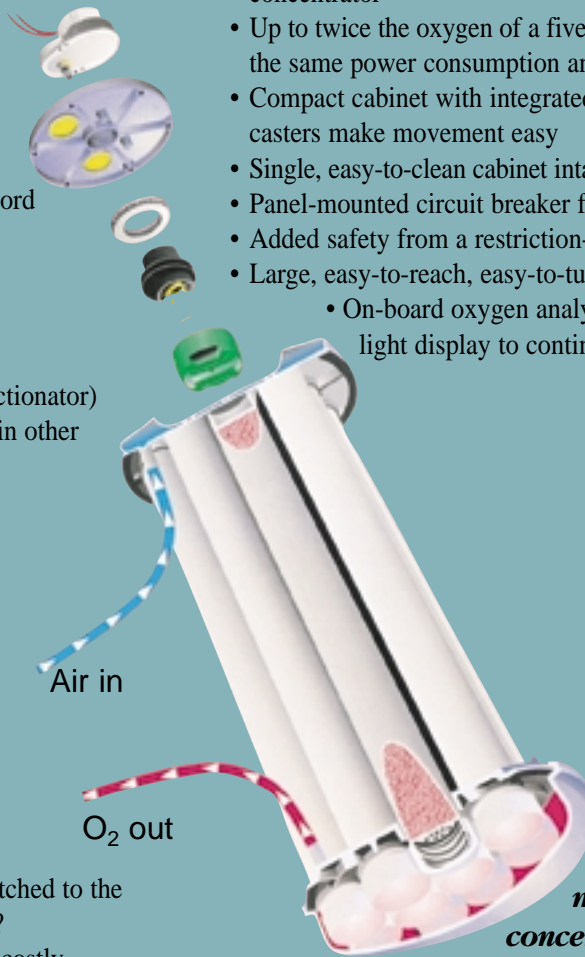
One mechanically integrated module, with a single moving part made of space-age composites

- Maintenance-free
- Self-cleaning
- Insensitive to contamination
- Invulnerable to wear

A compressor built for steady-state operation is matched to the ATF's constant low-pressure operation. The result? Elimination of the pressure swings that can lead to costly compressor rebuilds. True zero-clearance cabinet design eliminates the risk of overheating from blocked air intake.

For the User . . .

- Delivers up to 10 LPM of continuous O₂ to give high-flow patients the security, convenience and cost-effectiveness of a concentrator
- Up to twice the oxygen of a five-liter machine with essentially the same power consumption and operating cost
- Compact cabinet with integrated handle and four swivel-casters make movement easy
- Single, easy-to-clean cabinet intake filter is highly visible
- Panel-mounted circuit breaker for convenient reset
- Added safety from a restriction-sensitive flow meter
- Large, easy-to-reach, easy-to-turn flow-control knob
 - On-board oxygen analyzer (optional) has three-light display to continuously monitor performance.



The patented ATF® module: No conventional concentrator delivers the low-maintenance, problem-free operation of SeQual's ATF®-based Integra™ line. That's why providers worldwide choose Integra™ to reduce costs and improve patient care.

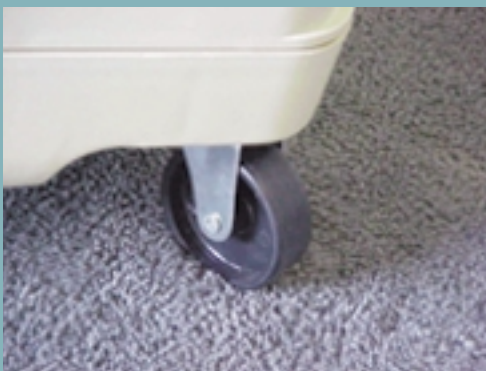
***A reliable, cost-effective way
to serve the high-flow patient.***

less than a perfect 10?

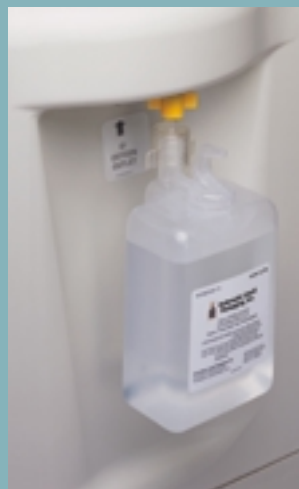


How can a concentrator the size of a five-liter unit produce up to twice the oxygen? The answer is SeQual's patented ATF® module — designed for maximum scalability. Our new ATF® module, which produces up to 10 liters per minute of continuous O₂, is a scaled-up version of our five-liter system. Same space-age composites. Same maintenance-free reliability. Up to twice the O₂ delivery.

We've packed 10 liters of continuous O₂ flow into a quiet, compact bedside unit.



Large, rugged casters have sturdy steel forks and make clearance and mobility easy.



Cabinet design accommodates even the most difficult humidifiers.

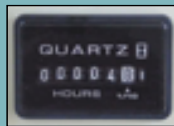


A "zero-clearance" air intake located atop the Integra™ prevents overheating if the unit is pushed against walls or draperies.



The new Integra_{TEN}TM features:

- Ultra-durable spring mounts on the compressor hold vibration and operating sounds at an absolute minimum;
- A convenient Velcro cord holder that simplifies storage and transport of the unit;
- An ergonomically designed handle that offers a sure grip and hand-fitting comfort;
- An improved texture that resists scratching, nicks and some of the usual wear-and-tear associated with transporting the unit;
- A discreetly located hour meter that lets service tech monitor use.




Pure O2 Limited
 Viking House
 71 Princess Road
 Urmston
 Manchester
 United Kingdom M41 5ST

T: 0870 712 0202
 F: 0207 681 3797
 E: info@healthoxygen.com
 W: www.healthoxygen.com

Integra_{TEN}TM Specifications

Performance

Flow rate: Variable 1 to 10 LPM
 (1/2 liter increments)

O₂ Concentration:

91% ± 3% @ sea level (1-10 LPM flow)

O₂ Pressure: 7 PSIG (48Kpa) nominal

Patient Controls

Control-panel-mounted On/Off switch

Control-panel-mounted Reset switch

Recessed, large, low-resistance Flow Control knob

Restriction-sensitive Flow Meter

Alarms (no battery required)

Power Failure

O₂ Concentration (optional on some models)

Irregular Pressure

General

Size: 26.0 H x 14.7 W x 19.1 Deep (in)

58.4 H x 39.4 W x 47.0 Deep (cm)

Weight: 57 lbs (26kg)

Approvals

Class II Equipment

Double Insulated 

Type B Applied Part 

CE Mark (Part #2621 only)

Model Selection Guide

Part No. 2622 Integra Model 6323-10
 Without O2 monitor
 110 volt; 60 Hz

Part No. 2620 Integra Model 6323OM-10
 With O2 monitor
 110 volt; 60 Hz

Part No. 2623 Integra Model 6323-10
 Without O2 monitor
 220 volt; 50 Hz

Part No. 2621 Integra Model 6323OM-10
 With O2 monitor
 220 volt; 50 Hz